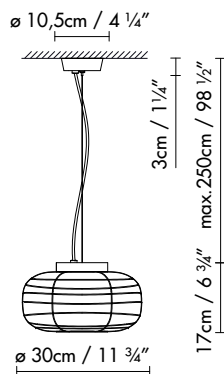
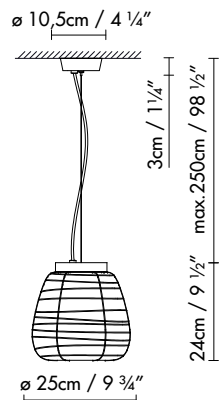


1

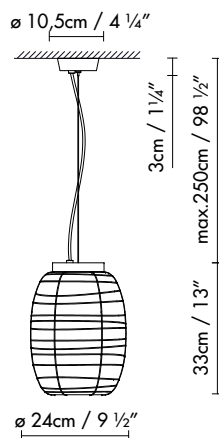
S15



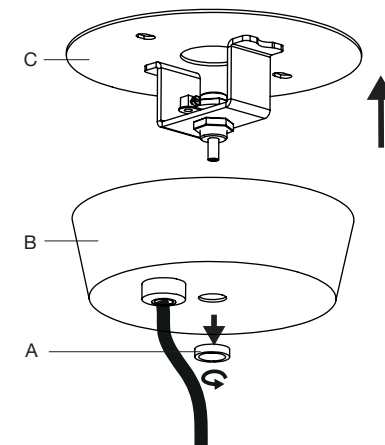
S25



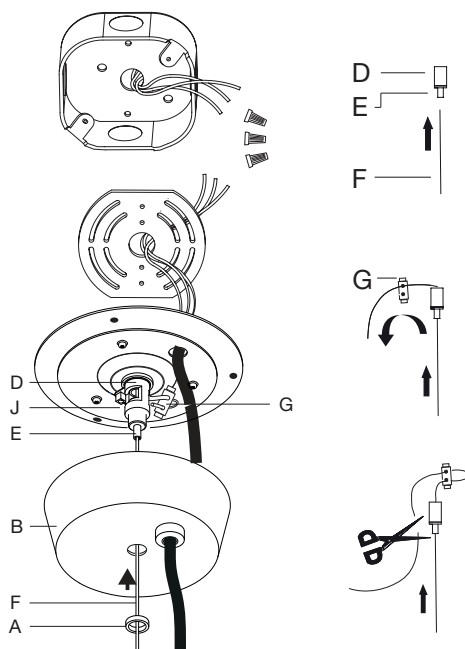
S35



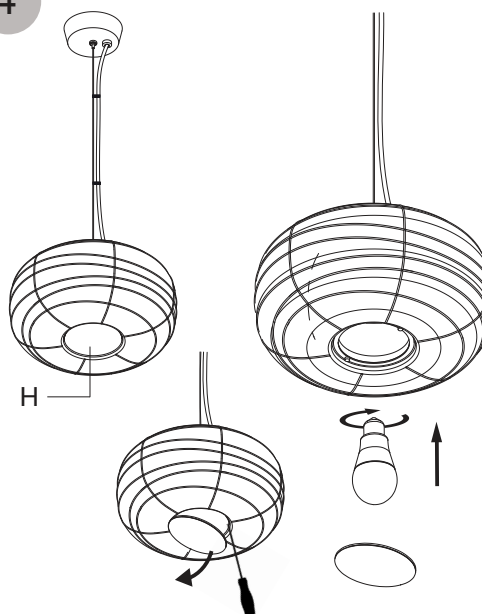
2



3



4

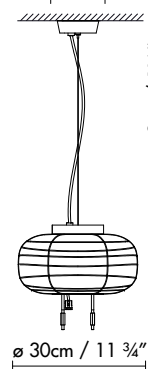


1. General dimensions of the lamp.
2. Unthread the nut (A) from the canopy (B) and detach the canopy from the base plate (C).
3. Pass the electrical connection cable through the hole in the base plate (C) and secure it to the ceiling using the plugs, washers and lag screws provided.
Thread the steel wire (F) through the nut (A) and canopy (B). Tighten part (E) on the tensor (D) and route the steel wire (F) through the tensor, pulling it out the side. Tense the cable at the desired length. Secure the safety lock for the steel wire (G). Cut the leftover. Make the electrical connections. Connect the ground (J) on the canopy in the connection strip. Secure the canopy.
4. Remove the cover (H) using a flat-head screwdriver. Screw the bulb into the bulb holder. Return the cover to its position.

1

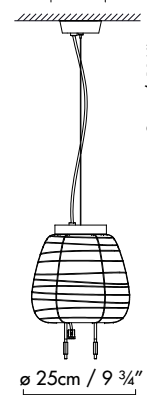
S15 SUPERIOR

ø 10,5cm / 4 1/4"



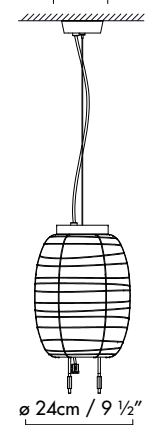
S25 SUPERIOR

ø 10,5cm / 4 1/4"



S35 SUPERIOR

ø 10,5cm / 4 1/4"



S2 GLASS

EXAMPLE:
(S35 SUPERIOR + S15 INFERIOR)

SUPERIOR (15 / 25 / 35)

INFERIOR (15 / 25 / 35)

S3 GLASS

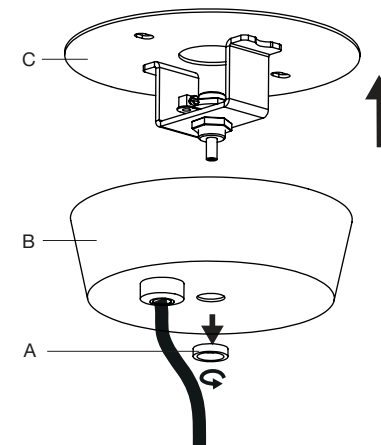
EXAMPLE: (S25 SUPERIOR +
S15 INTERMEDIATE + S35 INFERIOR)

SUPERIOR (15 / 25 / 35)

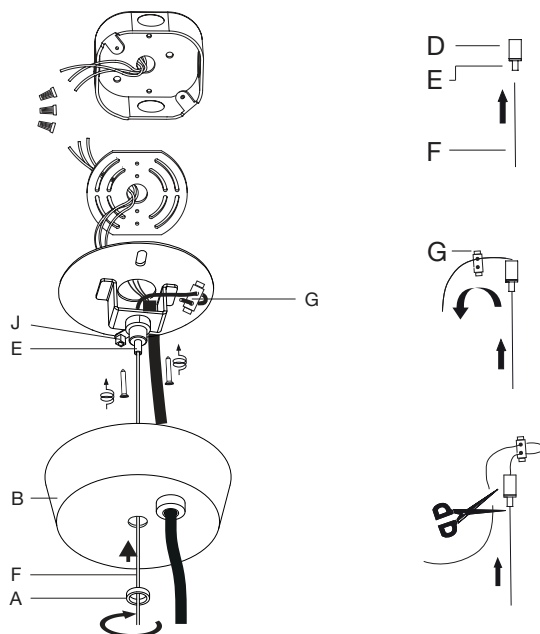
INTERMEDIATE (15 / 25 / 35)

INFERIOR (15 / 25 / 35)

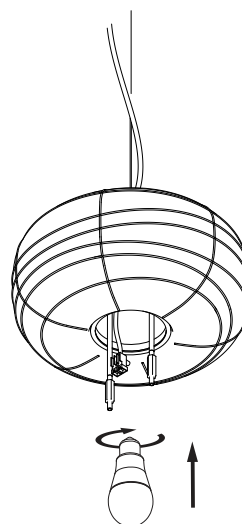
2



3



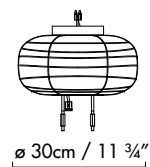
4



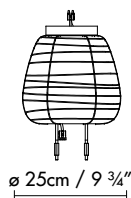
- General dimensions of the "Misko S2/S3 Top Glass". The Misko multiple suspension lamp is available with two diffusers (S2 Glass) or three diffusers (S3 glass), which allow combining the glass sections (15, 25 and 35), at the customer's discretion. "Misko Top" is the accessory that is used to install the canopy and the top glass section on the multiple lamp.
- Unthread the nut (A) from the canopy (B) and detach the canopy from the base plate (C).
- Pass the electrical connection cable through the hole in the base plate (C) and secure it to the ceiling using the plugs, washers and lag screws provided. Thread the steel wire (F) through the nut (A) and canopy (B). Tighten part (E) on the tensor (D) and route the steel wire (F) through the tensor, pulling it out the side. Tense the cable at the desired length. Secure the safety lock for the steel wire (G). Cut the leftover. Make the electrical connections. Connect the ground (J) on the canopy in the connection strip. Install the canopy on the ceiling.
- Screw the bulb into the bulb holder. Use instruction sheet for "Misko S3 Middle Glass" or "Misko S2/S3 Bottom Glass" to continue installing the lamp.

1

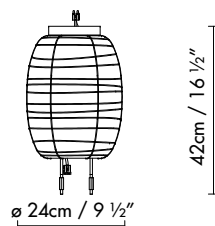
S15 INTERMEDIATE



S25 INTERMEDIATE



S35 INTERMEDIATE



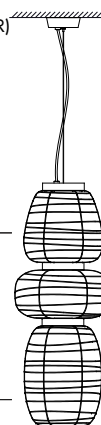
S3 GLASS

EXAMPLE: (S25 SUPERIOR+
S15 INTERMEDIATE + S35 INFERIOR)

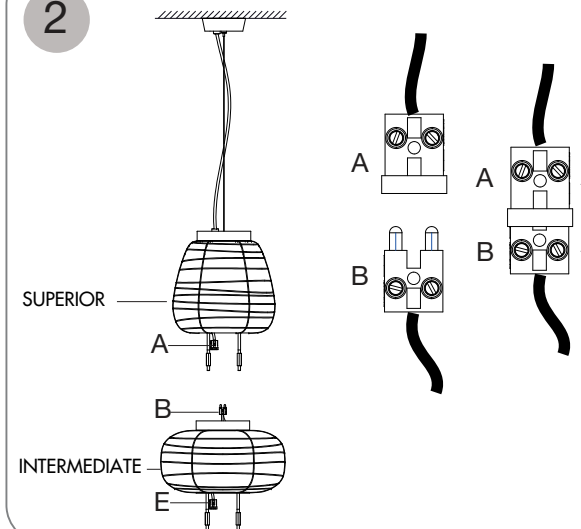
SUPERIOR (15 / 25 / 35)

INTERMEDIATE (15 / 25 / 35)

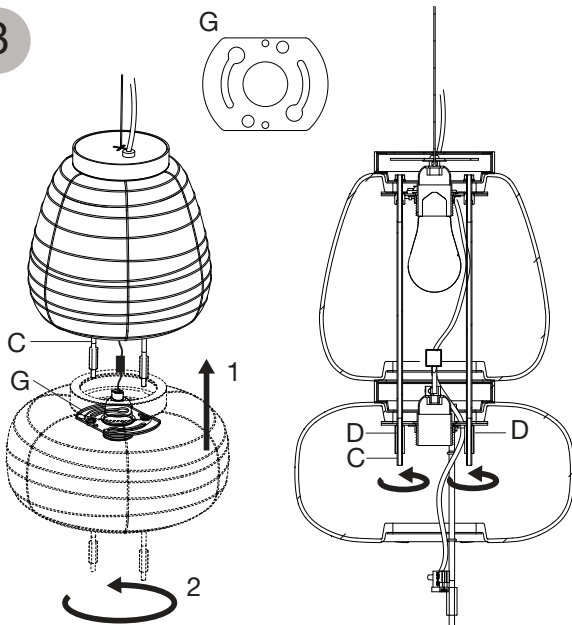
INFERIOR (15 / 25 / 35)



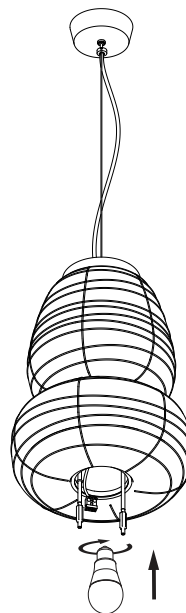
2



3



4



1. General dimensions of the "Misko S3 Middle Glass". The Misko multiple suspension lamp is available with three diffusers (S3 glass), which allow combining the glass sections (15, 25 and 35), at the customer's discretion. "Misko Middle" is the central glass section of the multiple lamp. Install "Misko S3 Middle Glass" after installing "Misko S2/S3 Top Glass" (see its instruction sheet).
2. Connect the connector (A) on "Misko Top" with the connector (B) on "Misko Middle".
3. Insert part (G) in "Misko Middle" into the stems (C) on "Misko Top". Turn the entire assembly so that "Misko Middle" rests on the nuts (D). Tighten the nuts (D) so that "Misko Middle" is firmly attached.
4. Screw the bulb into the bulb holder on "Misko Middle". To continue installing the lamp, follow the steps in the instruction sheet for "Misko S2/S3 Glass Bottom".

MISKO S2/S3 GLASS INFERIOR

Stone Designs, 2018

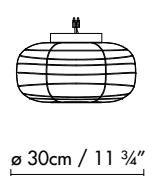
LED 10W (E26) 120V 50-60Hz
Fluo/CFL max.12W (E26) 120V 50-60Hz
Inc. max. 40W (E26) 120V 50-60Hz

IP20

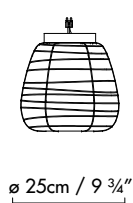
Class I

1

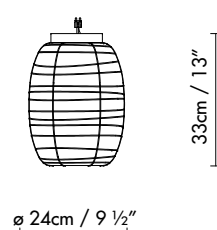
S15 INFERIOR



S25 INFERIOR



S35 INFERIOR



S2 GLASS

EXAMPLE:
(S35 SUPERIOR + S15 INFERIOR)

SUPERIOR (15 / 25 / 35) _____

INFERIOR (15 / 25 / 35) _____



S3 GLASS

EXAMPLE: (S25 SUPERIOR+
S15 INTERMEDIATE + S35 INFERIOR)

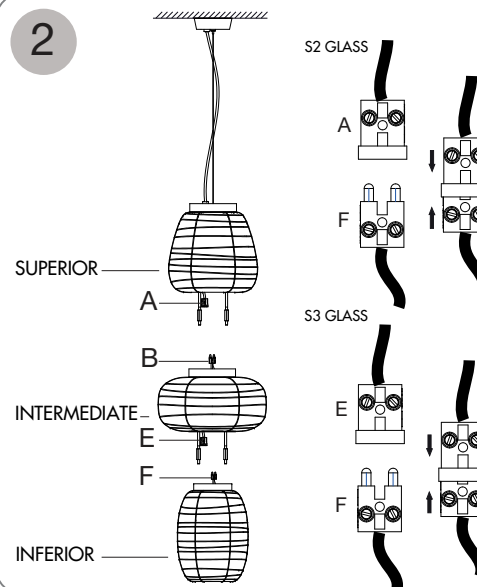
SUPERIOR (15 / 25 / 35) _____

INTERMEDIATE (15 / 25 / 35) _____

INFERIOR (15 / 25 / 35) _____



2



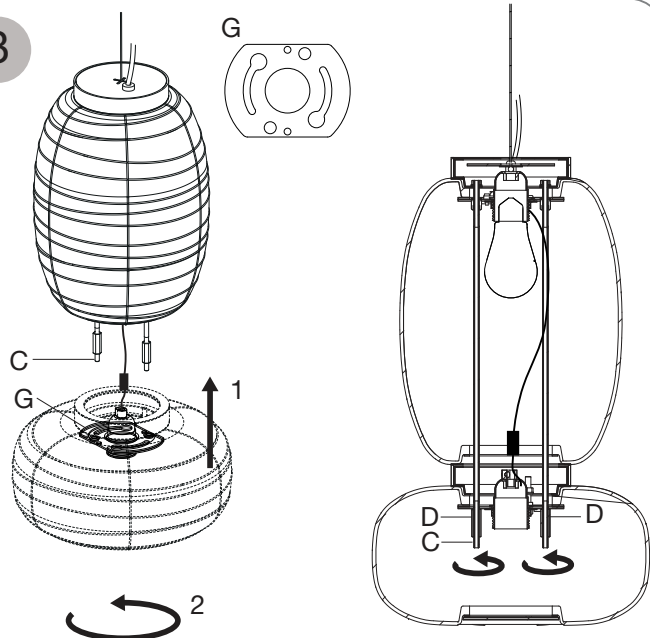
1. General dimensions of the “Misko S2/S3 Bottom Glass”. The Misko multiple suspension lamp is available with two diffusers (S2 Glass) or three diffusers (S3 glass), which allow combining the glass sections (15, 25 and 35), at the customer’s discretion. “Misko Bottom” is the lower glass section on the multiple lamp and has to be assembled after “Misko S2/S3 Top Glass” for a two-glass suspension lamp, and after the “Misko S3 Intermediate Glass” if installing a three-glass section lamp.

2. “Misko Bottom” has a male connector (F) that has to be connected to connector (A) to install a “Misko S2 Glass”, and to connector (E) to install the “Misko S3 Glass” version.

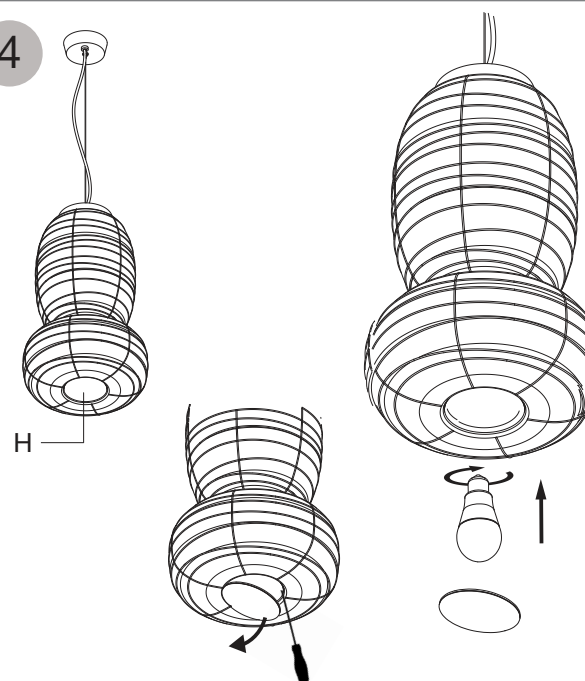
3. Insert part (G) from “Misko Bottom” into the stems (C) on “Misko Top” or “Misko Middle”. Turn the entire assembly so that “Misko Bottom” rests on the nuts (D). Tighten the nuts (D) so that “Misko Bottom” is firmly attached.

4. Remove the cover (H) using a flat-head screwdriver. Screw the bulb into the bulb holder. Return the cover to its position.

3



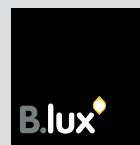
4



Consumer information:

- Lamps without the IP mark are classed as IP20 and are designed for general interior use, except wet areas (bathrooms, etc.)
- Lamps with the IP mark are designed for exterior use and in wet areas. (E.g. IP54)
- They offer guaranteed protection to people and animals against electrical discharge:
 - Class I: through single electrical insulation and an earthing conductor once correctly connected.
 - Class II: through double electrical insulation.
 - Class III: these kinds of lamps should be connected at very low voltage levels (generally 12V); therefore there is no risk.
- Lamps with this symbol, or without any symbols, can be mounted directly onto normally inflammable surfaces.
- Lamps with this symbol cannot be mounted directly onto normally inflammable surfaces.
 - The safety of this lamp is guaranteed by using a maximum wattage bulb that does not exceed the figure displayed visibly on the lamp.
- The product cannot be treated like conventional domestic waste; it must be taken to the corresponding recycling point for electrical and electronic equipment.

Assembly instructions



B.LUX S.A.
Pol. Ind. Okamika, pab. 1
48289 Gizaburuaga (Bizkaia) Spain
T. (+34) 94 682 72 72
F. (+34) 94 682 49 02
info@grupoblux.com
www.grupoblux.com